



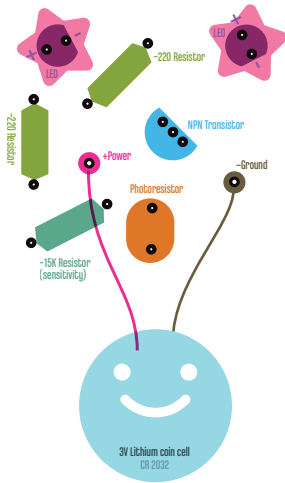
PCB01

Dark Detector Circuit

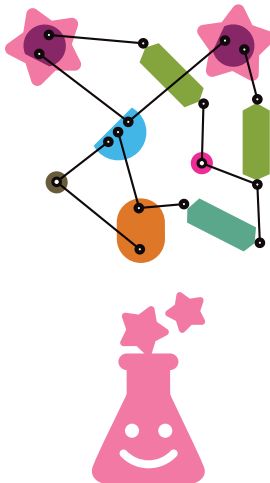
sparkle labs

Paper Circuit Business Card
Dark Detector

www.kits.sparklelabs.com
ariel@kits.sparklelabs.com
tweet @sparklelabs



FOLD



Parts:

- 2 5mm LEDs
- NPN transistor
2222A or 3904
- photoresistor
- 2 220Ω resistors
100Ω - 220Ω ok.
- 15000Ω resistor
change value to change sensitivity
- 3v lithium coin cell
CR2032 or other 3v - 5v source
- Jumper wire
to connect to battery
- Clip or band
to attach wires to battery

Instructions:

1. Print on or paste to heavyweight paper
2. Cut out and fold cards
3. Poke holes at white dots
4. Place parts through holes
5. Connect leads on other side as shown with black lines
6. Use a clip to connect power and ground to the battery with jumper wires. Clip must be non-conductive.

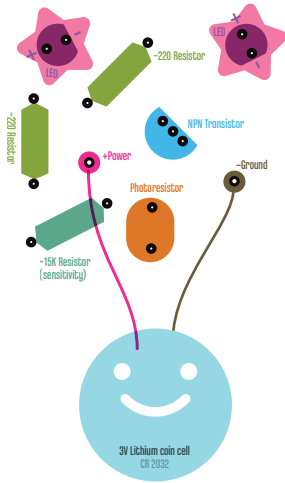
Tips:

- Test your circuit on a breadboard first.
- Use a thumbtack to create the holes.
- Use small pliers to twist leads together.

sparkle labs

Paper Circuit Business Card
Dark Detector

www.kits.sparklelabs.com
ariel@kits.sparklelabs.com
tweet @sparklelabs



FOLD

